

The lapidarium of former German inhabitants of Gryfino

Gryfino



The lapidarium is located at the current municipal cemetery by its north wall and near Orłat Lwowskich Street. If You enter the cemetery from this very street, go eastwards.

The lapidarium was created at the turn of 1994 and 1995. It is the place where the tombstones of former residents of Gryfino were collected; and they came from the area of the current cemetery and the surrounding area. The lapidarium is not yet completed - is still being extended and newly found tombstones are gradually added. The 'Heimatkreis Greifenhagen' Association from Bersenbruck, Germany helps the town with the creation of the memorial place.

DETAILED INFORMATION

ADDRESS

Orłat Lwowskich [Gryfino](#)

COORDINATES

53.2595808638, 14.4947488415
53° 15' 34", 14° 29' 41"



Navigate to

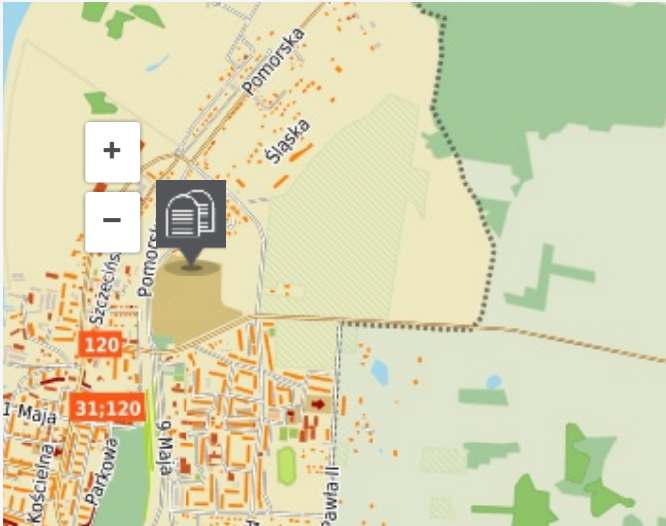


Show on the map



[Add to travel plan](#)

Geolocation



Dane mapy © OpenStreetMap CC BY-SA, © WODGIK Szczecin

COMMENTS

Sign in to leave a comment.



Project co-financed by the European Union from the European Regional Development Fund within the Regional Operational Programme for the West Pomeranian Voivodeship for the years 2007 to 2013.